



# Pulse Secure Client for Linux



# Installing Pulse Secure Client for Linux

Download the correct Pulse Secure Linux installer for your OS (RHEL or Ubuntu) from the UvA website.

The installation is carried out using the terminal interface.

The Pulse Secure client for Linux currently is designed only for CLI-based installation.

The Installation Command:

- Debian – based installation  
`dpkg -i <package name>`
- RPM – based installation  
`rpm -ivh <package name>`

The Upgrade Command:

- Debian – based installation  
`dpkg -i <package name>`
- RPM – based installation  
`rpm -Uvh <package name>`

The Uninstallation Command:

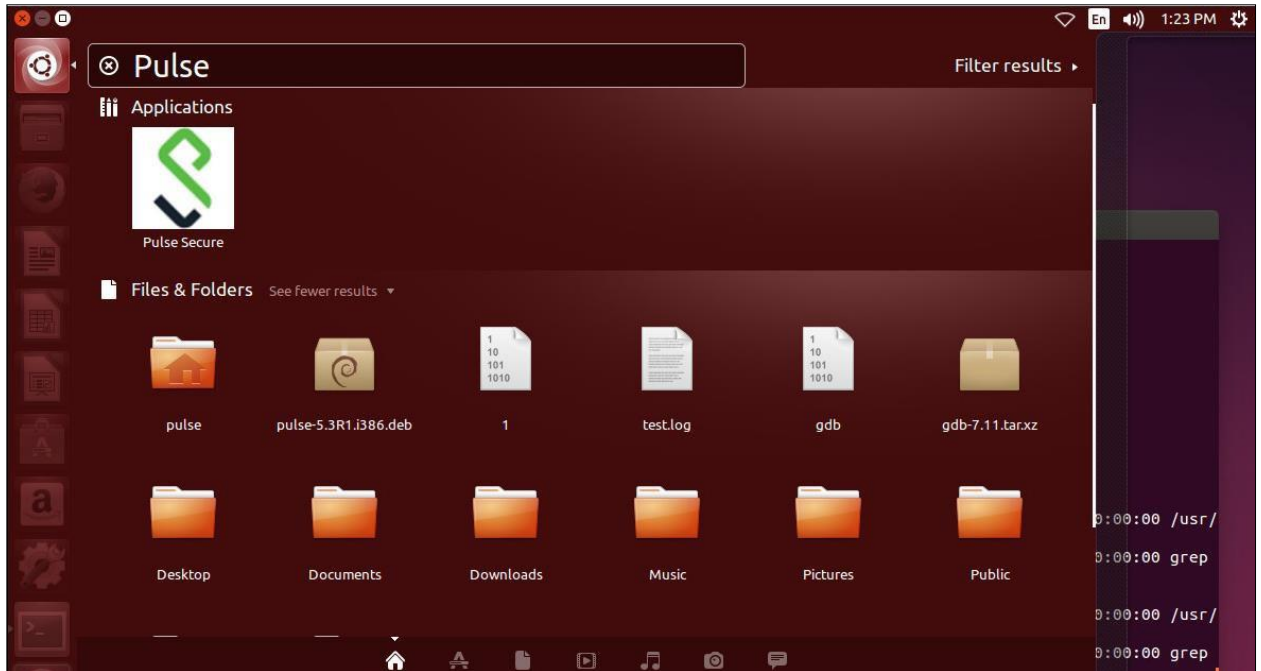
- Debian – based installation  
`dpkg -r <package name>`
- RPM – based installation  
`rpm -e <package name>`

## Using Pulse Linux Client UI

To launch UI from the Desktop

Pulse Linux Client UI can be launched by searching for Pulse Secure Icon under Applications List.

Figure 1 Pulse Secure Client for Linux Application



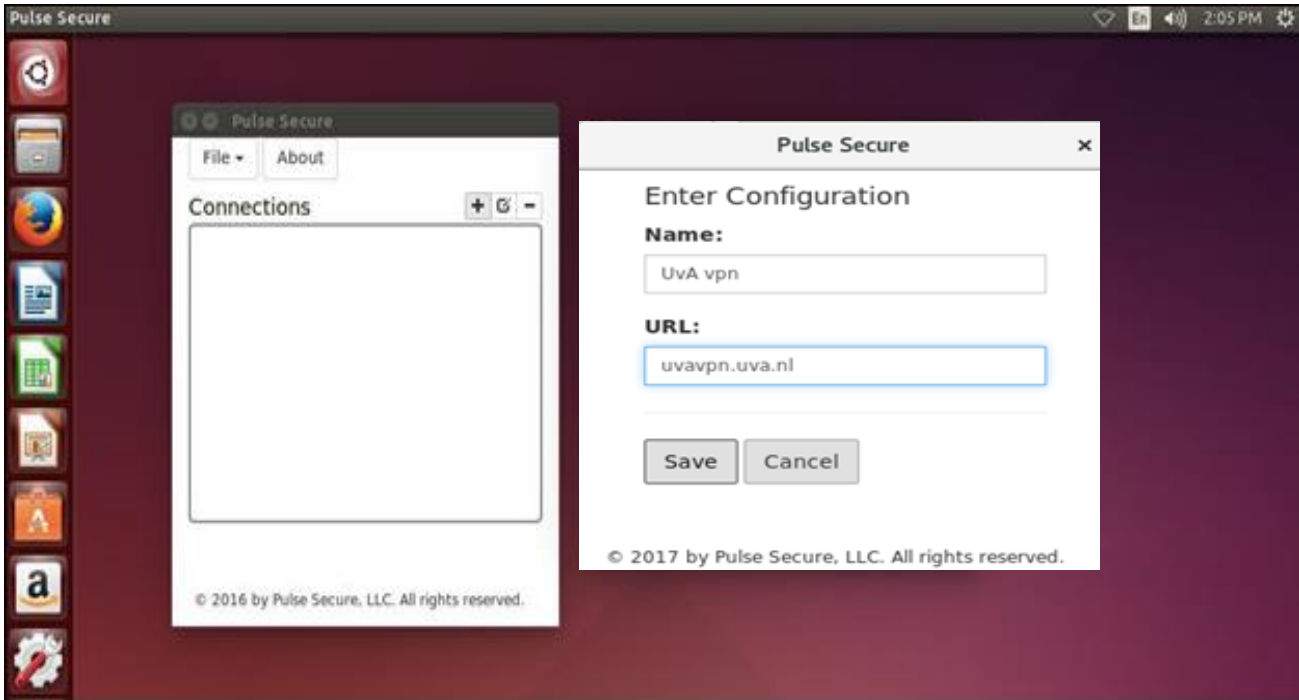
To launch UI from the Terminal

1. Append `/usr/local/pulse` to `LD_LIBRARY_PATH`  
`export LD_LIBRARY_PATH=$LD_LIBRARY_PATH:/usr/local/pulse`
2. Launch the UI by executing the below command  
`/usr/local/pulse/pulseUi`

## Adding VPN Connections

To create a Pulse Secure VPN connection on a Linux device:

Figure 2 Adding VPN Connection

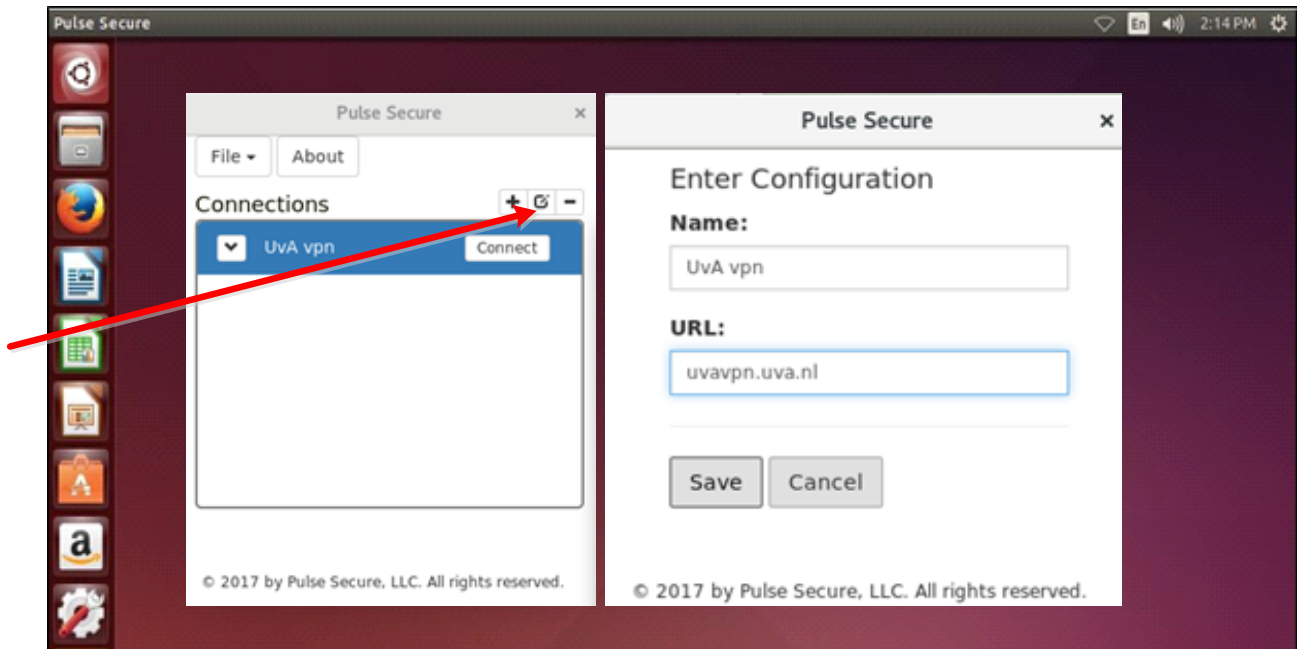


- Click on the Add (+) option on the top-right-hand corner of the main Pulse Secure Linux client screen.
  1. In the Name field, specify a name vpn\_gateway. (eg UvA-VPN)
  2. In the URL field, specify the URL for the vpngateway **uvavpn.uva.nl**
- The VPN connection appears in the VPN list after the user clicks the save button on the above screen  
The user can click connect to initiate a VPN connection. The VPN connection state is indicated in the VPN dropdown menu on the VPN list.

## Modifying VPN Connection

To modify a Pulse Secure VPN connection on a Linux device:

Figure 3 Modifying VPN Connection

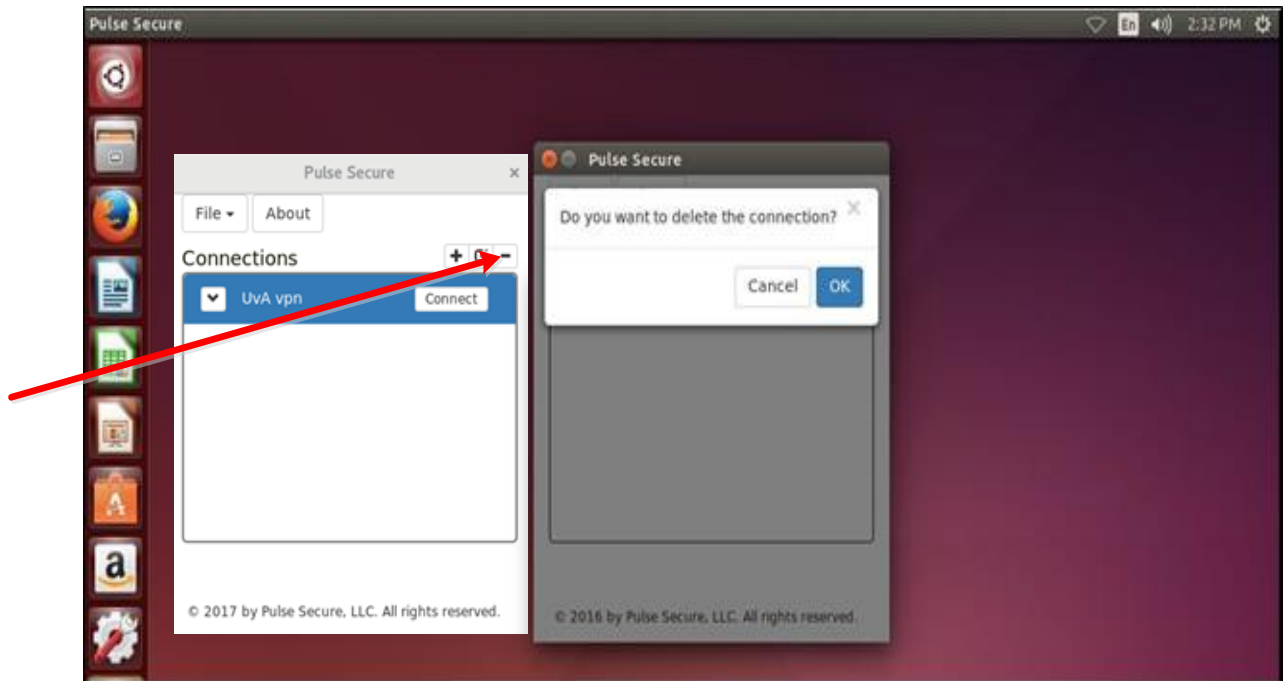


- Select the VPN connection and Click on the edit ([]) option on the top-right-hand corner of the main Pulse Secure Linux client screen.
    1. In the Name field, choose a name for the vpn gateway.
    2. In the URL field, specify the URL for the vpn gateway.
  - The modified VPN connection appears in the VPN list after clicking the save option on the above screen
- It is now possible to initiate a VPN connection. The VPN connection state is indicated in the VPN dropdown menu on the VPN list.

## Removing VPN configuration

In order to remove a vpn configuration:

Figuur 4 removing a vpn configuration

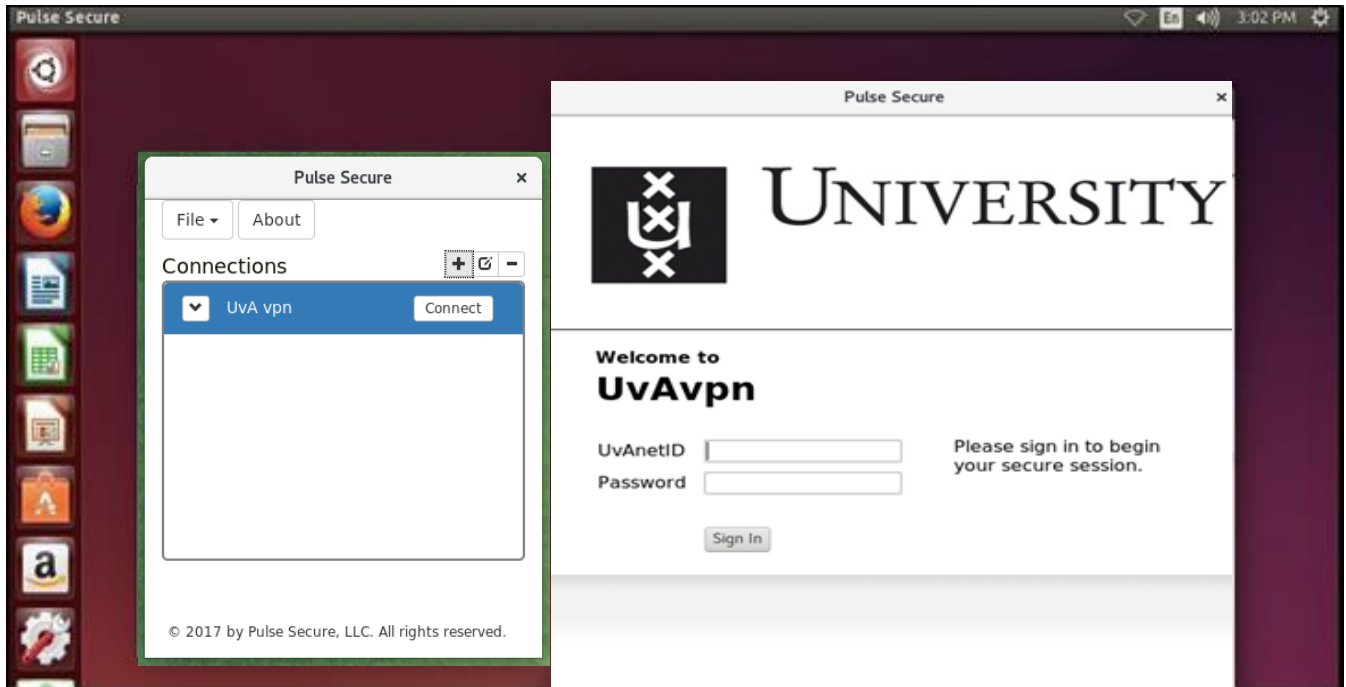


1. Select the VPN connection and choose the delete (-) optie (top right hand side) on the connections screen
2. The VPN configuration will be removed after OK is selected.

## Initiating VPN Connection

To initiate a Pulse Secure VPN connection on a Linux device:

Figure 5 Initiating VPN Connection



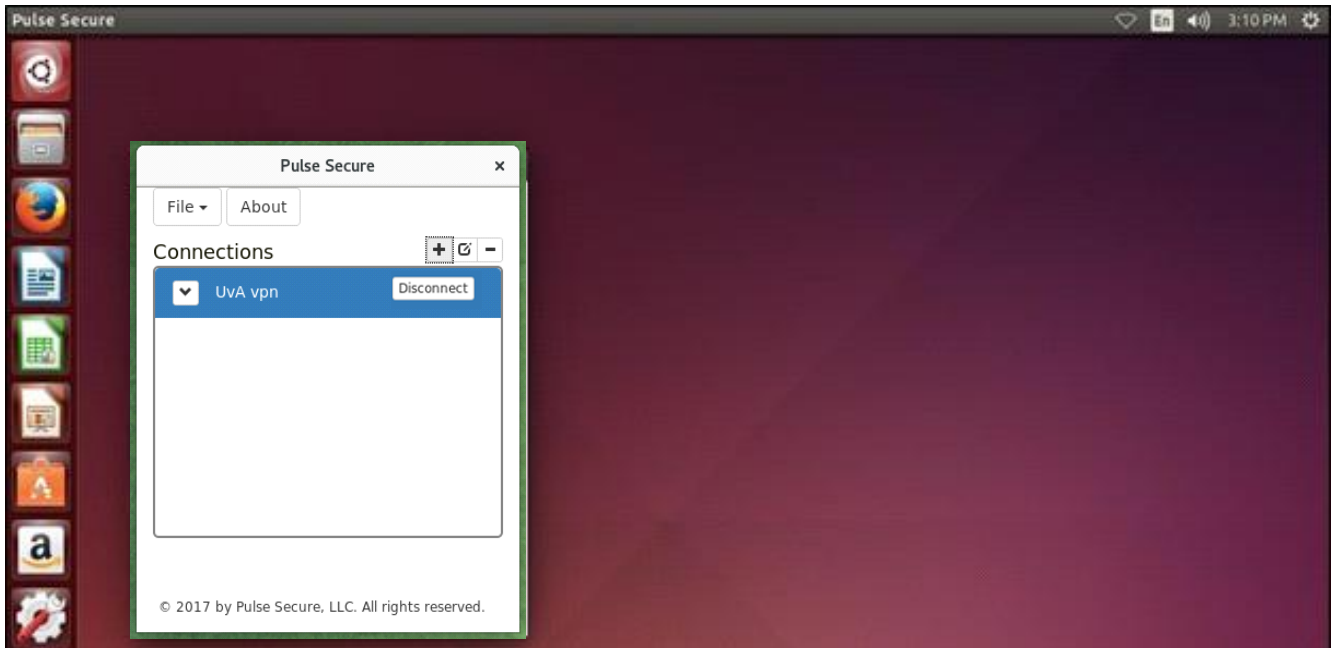
1. Select the VPN connection and Click on the Connect option of the VPN connection entry in the Main Pulse Secure Linux client screen.
2. A new window opens up to continue authentication process. Fill in your UvA ID and password.



## Terminating VPN connection

To terminate a Pulse Secure VPN connection on a Linux device:

Figure 6 Terminating VPN Connection



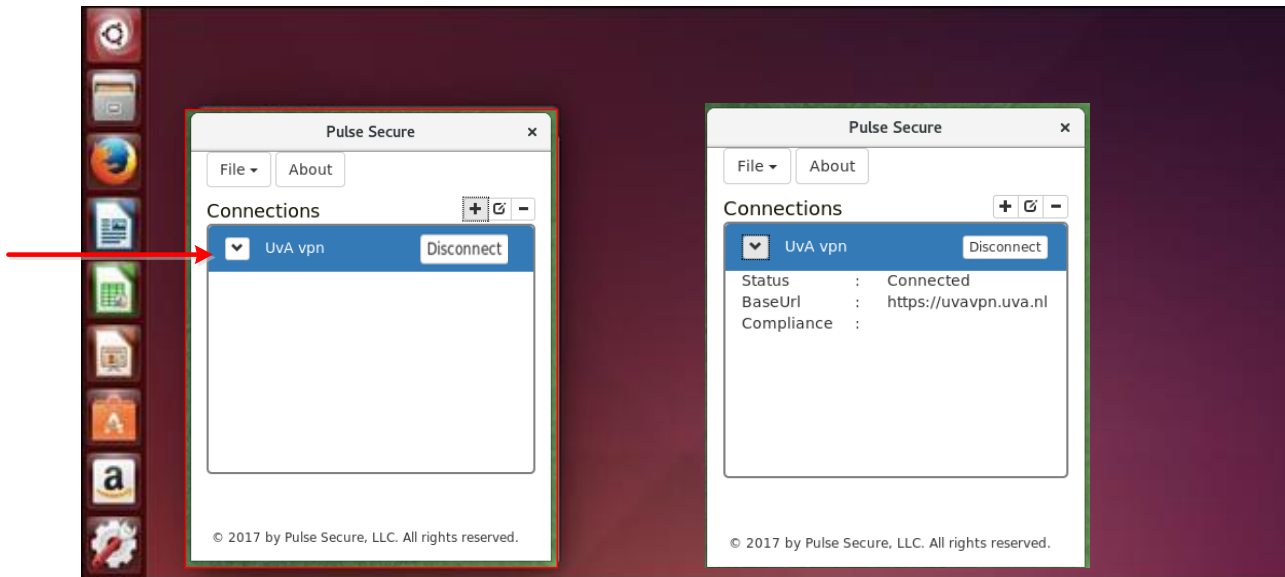
Select the VPN connection and Click on the Disconnect option of the VPN connection entry in the Main Pulse Secure Linux client screen.



## Status of the connection

In order to check the status of connected session click on the drop down option (arrow) for the same VPN connection entry.

Figure 7 Status Check



## Open Connect Software for vpn (alternative vpn software)

Some vpn users may wish to use the Open Connect software instead of Linux Pulse Secure. On the UvA Communities website you will find a description for Open Connect. You can access this by using the link below.

<http://linux-support.uva.nl/portal/site/80809a78-36a6-4a3c-a0d3-62db5d6741b3/page/143d5f11-f56d-4b50-ab12-304ad03eb6f7>